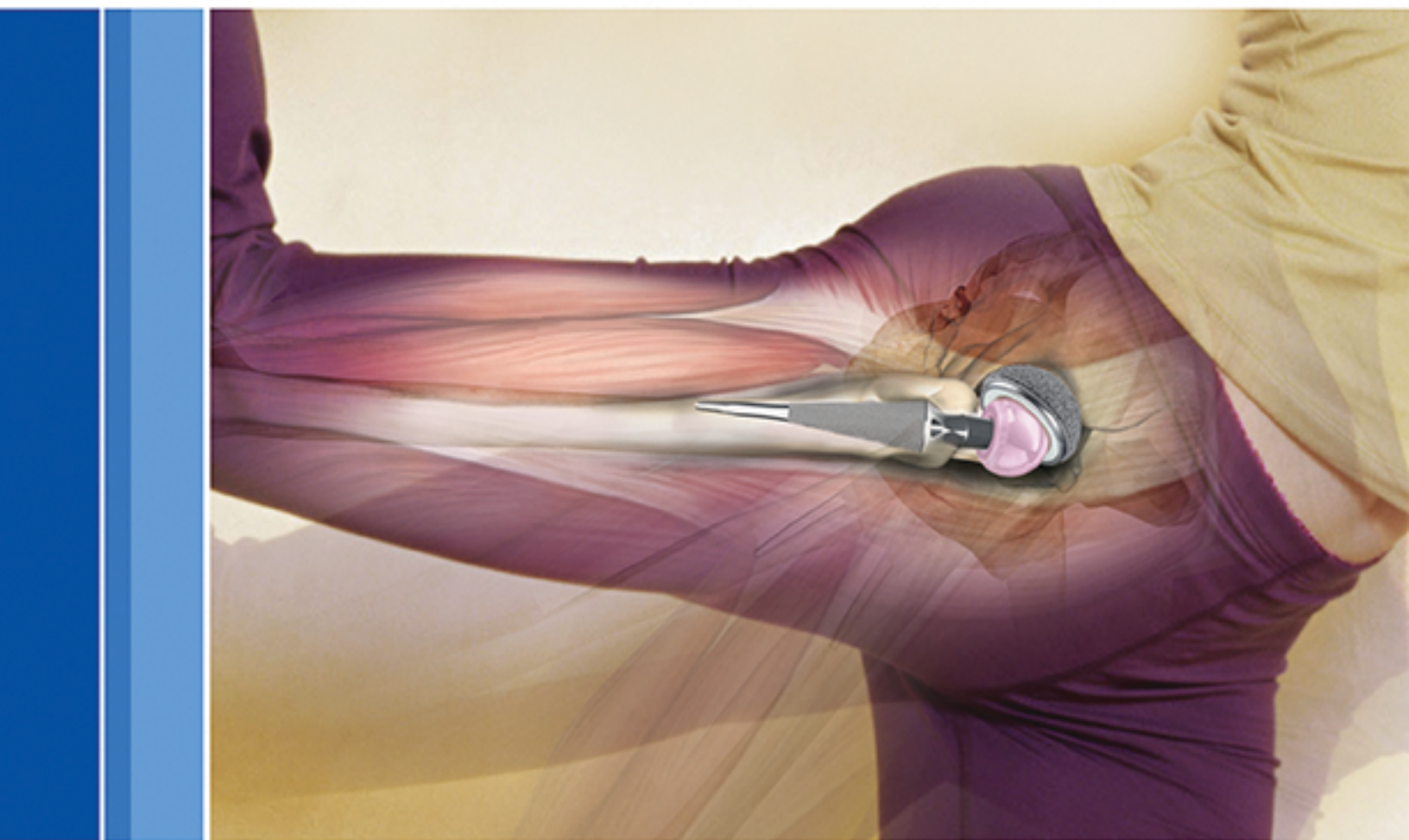


# Aesculap® Total Hip Solution

Anatomic precision. High performance.



Aesculap Orthopaedics

**AESCULAP.**  
Implant Systems

# Aesculap® Total Hip Solution

## Dynamic Implant Options

With a comprehensive portfolio of implant options, the Aesculap Total Hip Solution helps ensure optimal fit for all patient anatomies:

### Hip Stems

- **Metha® Short Hip Stem:** Achieves true metaphyseal anchoring for cementless Total Hip Arthroplasty (THA). Ideal for minimally invasive techniques.
- **Excia® Standard Hip Stem:** Bone preserving straight stem available in cemented or uncemented fixation design.

### Femoral Heads

- **Bipolar Head:** Self-centering design, monoblock construction, easy-lock ring assembly.
- **BioloX® Delta Head:** Outstanding biocompatibility, excellent stability, extremely low wear rates.

### Acetabular Cup

- **Plasmafit™ Pro with Vitelene™ Liner:** Porous coated acetabular shell and vitamin E stabilized liner.

## Anatomic Accuracy

Based on innovative, intelligently designed components, the Aesculap Total Hip Solution mimics patient anatomy and helps restore natural biomechanics for exceptional joint stability and a high level of functionality. The stem anteversion and head position of the optimized Metha stem provide excellent primary and secondary stability.

## Five-Year Clinical Results

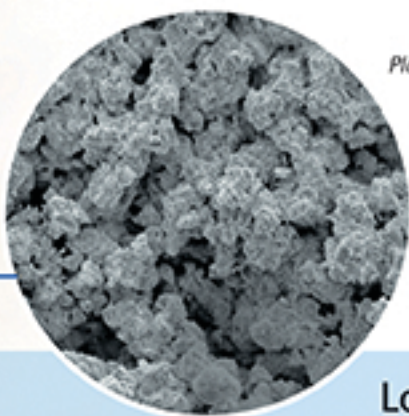
Metha short hip stem five-year data demonstrates anatomic accuracy and the ability to restore natural biomechanics and ensure excellent joint stability.

- 97% Kaplan-Meier survival curve
- No dislocation
- No distal loading

Visit [aesculapimplantsystems.com/TotalHip](http://aesculapimplantsystems.com/TotalHip) to read the complete Metha five-year study.



*Plasmafit™ Pro  
Acetabular Cup*



*Plasmafit™ Pro Coating*

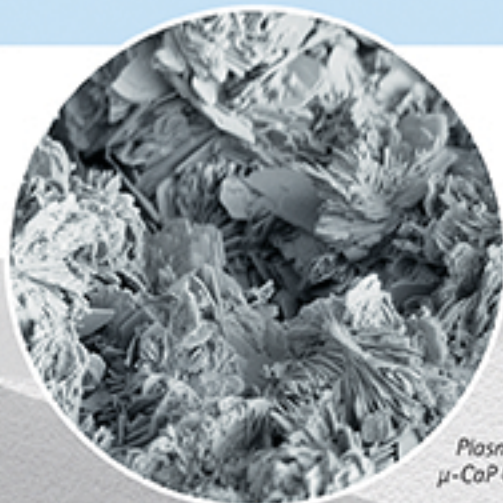
*Biolog® Delta Head*



## Long-Term Stability

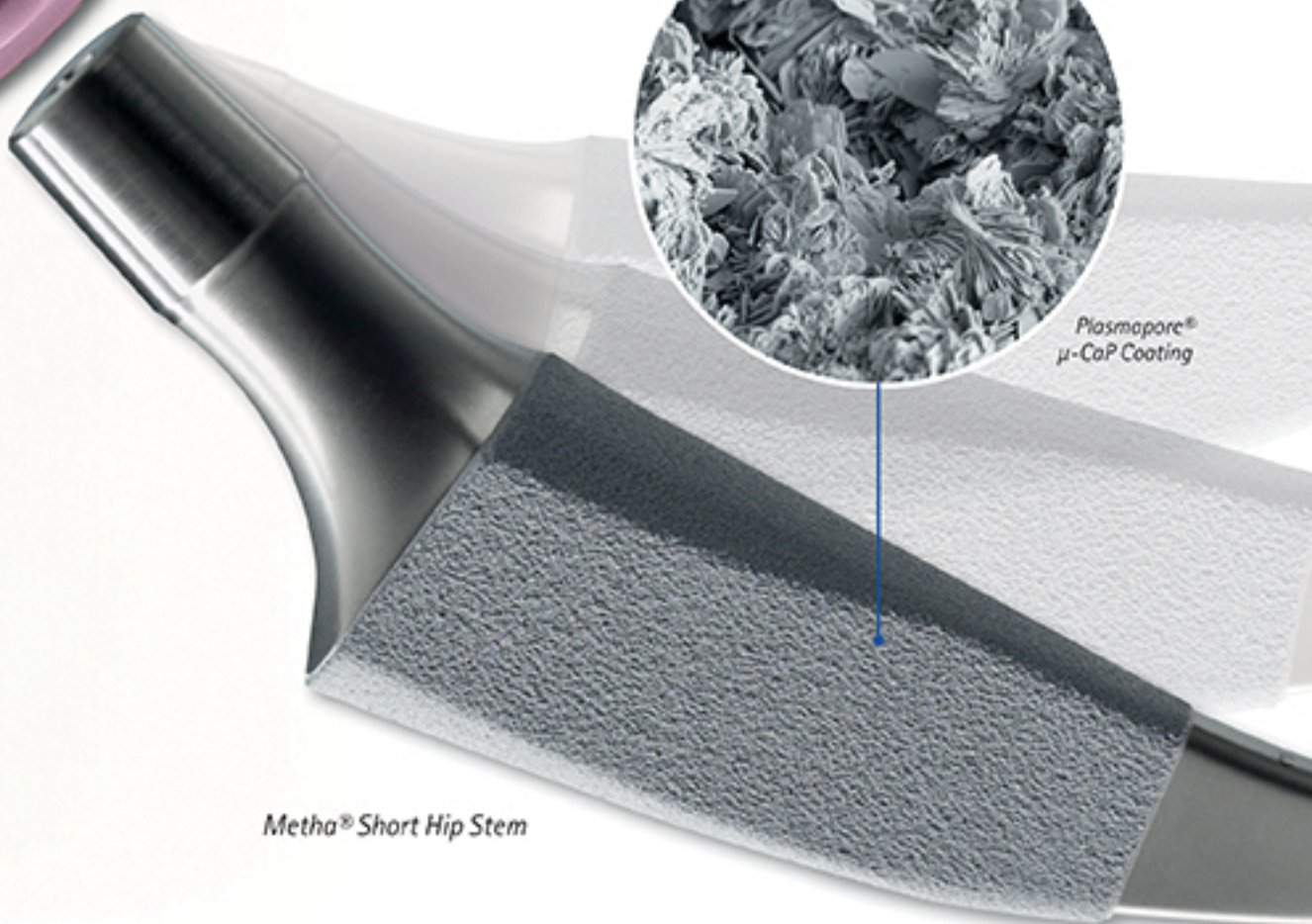
Porous surface technologies increase implant stability, extending the survivorship of the system through the potential for biological fixation.

- The Metha and Excia stems' Plasmapore®  $\mu$ -CaP advanced coating technology is a combination of a microporous Ti-plasma rough coating and a thin bioactive calcium phosphate surface finish.
- The Plasmafit Pro acetabular cup system provides for initial scratch fit fixation through an ultra-porous surface coating.



*Plasmapore®  
 $\mu$ -CaP Coating*

*Metha® Short Hip Stem*

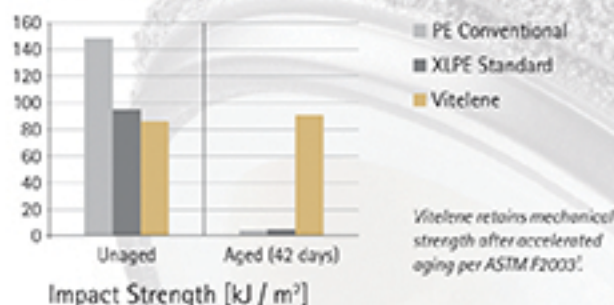




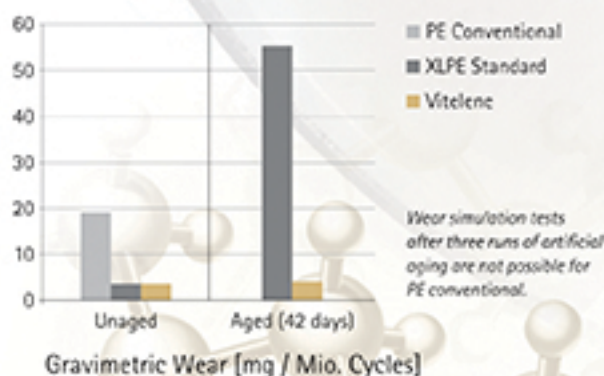
## High Articulation

The Biolox Delta femoral head and Vitelene vitamin E blended acetabular liner deliver an advanced bearing surface that reduces wear and maintains mechanical integrity, meeting high-performance articulation demands.

## MAINTAINS MECHANICAL PROPERTIES<sup>1</sup>

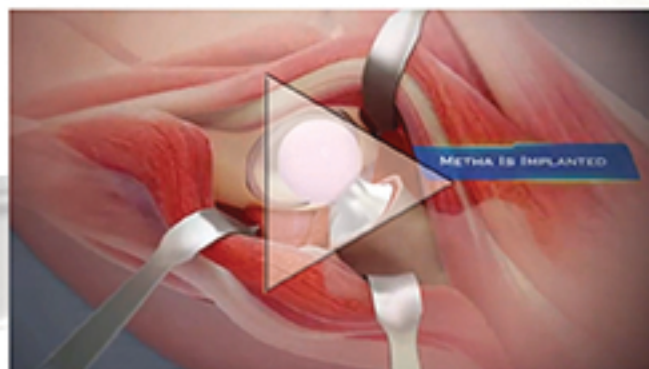


## REDUCES WEAR<sup>2</sup>



<sup>1</sup>Bench testing is not necessarily indicative of clinical performance. Data on file.

<sup>2</sup>The results of in vitro hip wear simulator tests have not been shown to quantitatively predict clinical wear performance. Data on file.

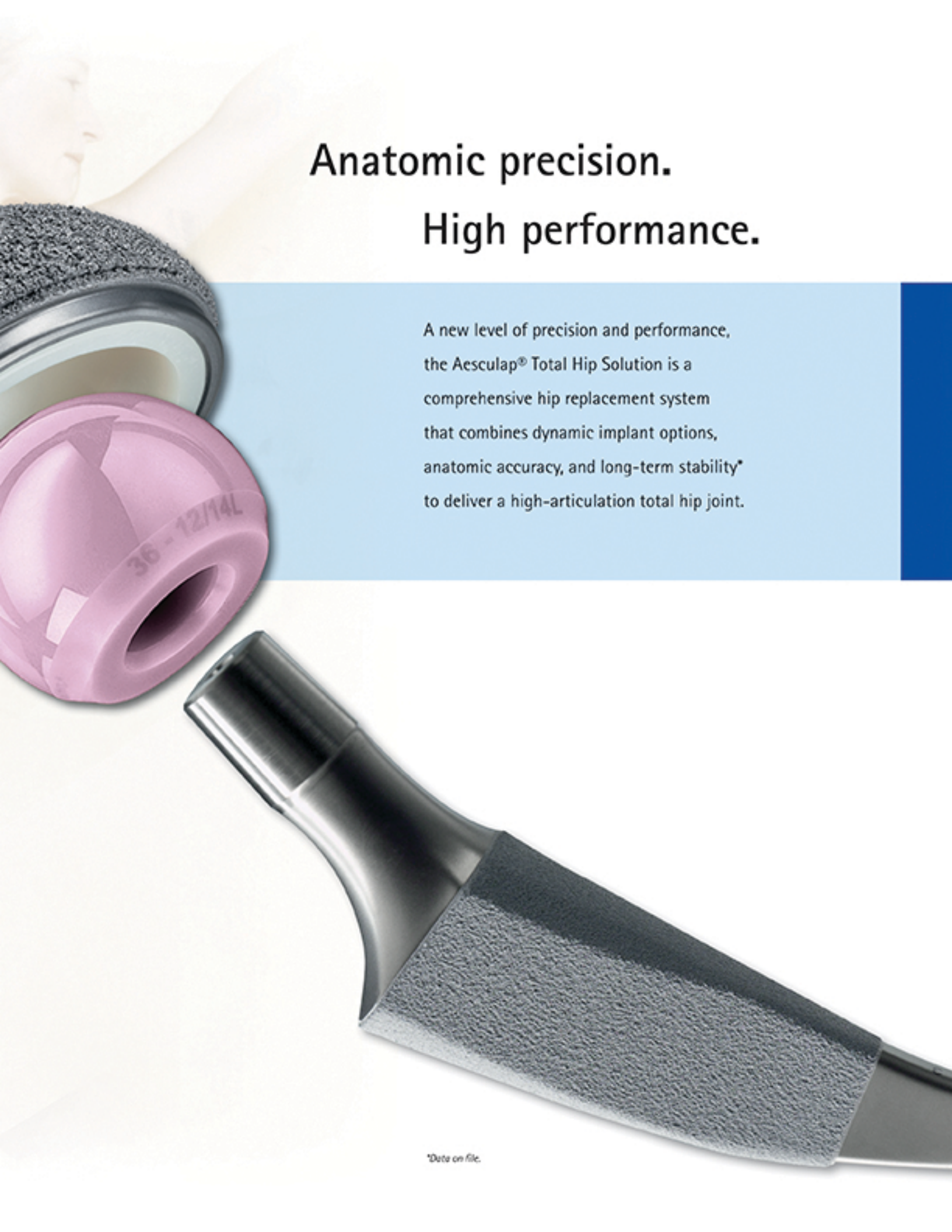


## See it in motion!

Take a closer look at the Aesculap Total Hip Solution, including an animated implant system video, at [aesculapimplantsystems.com/TotalHip](http://aesculapimplantsystems.com/TotalHip).

For complete indications, contraindications, warnings, and potential risks, visit [aesculapimplantsystems.com](http://aesculapimplantsystems.com).

*Biolox is a registered trademark of CeramTec.*



Anatomic precision.

High performance.

A new level of precision and performance, the Aesculap® Total Hip Solution is a comprehensive hip replacement system that combines dynamic implant options, anatomic accuracy, and long-term stability\* to deliver a high-articulation total hip joint.

\*Data on file.



All rights reserved. Technical alterations are possible. This leaflet may be used for no other purposes than offering, buying and selling of our products. No part may be copied or reproduced in any form. In the case of misuse we retain the right to recall our catalogs and price lists and to take legal actions.

©2014 AESCULAP, ALL RIGHTS RESERVED, PRINTED IN THE USA.  
Aesculap is an equal opportunity employer.

Aesculap Implant Systems, LLC | 3773 Corporate Parkway | Center Valley, PA | 18034  
Phone 866-229-3002 | Fax 610-984-9096 | [www.aesculapimplantsystems.com](http://www.aesculapimplantsystems.com)

Aesculap Implant Systems, LLC – a B. Braun company

DOC1173 1M 07/14