

# MACS TL<sup>®</sup>

Modular Anterior Construct System for the Thoracic and Lumbar Spine



Aesculap Spine

**AESCULAP**<sup>®</sup>  
Implant Systems

# MACS TL<sup>®</sup>

## Choice Stability Accuracy

No other anterior plating system offers more implant choices and surgical approach flexibility than MACS TL. Engineered to maximize strength and stability with our unique four point fixation philosophy – the MACS TL delivers optimal resistance to bending, torsional, and axial loading. The MACS TL is a low profile anterior plate system designed to accommodate open, mini-open and endoscopic surgical techniques while allowing for variations in bone density, vertebral body size and additional posterior fixation.

The MACS TL plate is positioned independently of the fixation screws. By targeting the fixation screw along the inferior aspect of the vertebral body, the surgeon has the opportunity to utilize additional posterior pedicle screws, thus accommodating 360 degrees of stabilization. The MACS TL is indicated for use when treating tumor, fracture, degeneration and scoliosis of the thoracic and lumbar spine.

### Advantages

- Precision endoscopic, mini-open and open instrumentation
- Multiple implant options for an uncompromising choice
- Addresses single and multi-level column stabilization needs



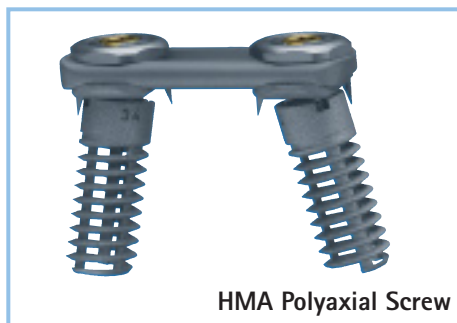
The Twin Screw delivers four point fixation for resistance to bending, torsional and axial loading for optimal stability and plate position flexibility.



The XL Screw provides revision capability with greater purchase for increased pull out strength while maintaining the four point fixation philosophy.



The Thoracic Extension option accommodates the limited anterior posterior dimension of the upper thoracic region, while providing four point stability by positioning the screws vertically for maximized purchase.



The HMA Screw provides unsurpassed pullout strength for compromised or insufficient bone quality.



The Monoaxial option specifically addresses the need for multilevel correction, while maintaining all the advantages of high pull out strength and stability.

# MACS TL<sup>®</sup> Implant Overview

## Twin Screw Standard

### Polyaxial Screws, 7.0 mm

Used in Twin Screw Standard Construct

| Item No. | Length |
|----------|--------|
| SX792T   | 25 mm  |
| SX793T   | 30 mm  |
| SX794T   | 35 mm  |
| SX795T   | 40 mm  |
| SX796T   | 45 mm  |
| SX797T   | 50 mm  |



### Stabilization Screws, 6.5 mm

Used in Twin Screw Standard and XL Constructs

| Item No. | Length |
|----------|--------|
| SX782T   | 25 mm  |
| SX783T   | 30 mm  |
| SX784T   | 35 mm  |
| SX785T   | 40 mm  |
| SX786T   | 45 mm  |
| SX787T   | 50 mm  |



### Polyaxial Clamp

Used in Twin Screw Standard Construct

| Item No. | Size     |
|----------|----------|
| SX800T   | One Size |



## Twin Screw XL

### Polyaxial Screws, 10.0 mm\*

Used in Twin Screw XL Construct

| Item No. | Length |
|----------|--------|
| SX821T   | 30 mm  |
| SX823T   | 40 mm  |

\*Available through special order



## Twin Screw Thoracic

### Stabilization Screws, 4.5 mm

Used in Twin Screw Thoracic Construct

| Item No. | Length |
|----------|--------|
| SX826T   | 15 mm  |
| SX827T   | 20 mm  |
| SX828T   | 25 mm  |
| SX829T   | 30 mm  |



### Thoracic Clamp

Used in Twin Screw Thoracic Construct

| Item No. | Size     |
|----------|----------|
| SX801T   | One Size |



## HMA Polyaxial Screw

### HMA Polyaxial Screws, 12 mm

Used in HMA Polyaxial Screw Construct

| Item No. | Length |
|----------|--------|
| SX805T   | 26 mm  |
| SX806T   | 30 mm  |
| SX807T   | 34 mm  |
| SX808T   | 38 mm  |



## HMA Monoaxial Screw

### HMA Monoaxial Screws, 12 mm

Used for HMA Monoaxial Screw Construct

| Item No. | Length |
|----------|--------|
| SW137T   | 26 mm  |
| SW138T   | 30 mm  |
| SW139T   | 34 mm  |
| SW140T   | 38 mm  |



# MACS TL<sup>®</sup> Implant Overview

## General Implant Components

### Fixation Nut

| Item No. | Thread |
|----------|--------|
| SX802T   | M 11   |



### Anterior Stabilization Plates

| Item No. | Length |
|----------|--------|
| SX810T   | 40 mm* |
| SX811T   | 45 mm  |
| SX812T   | 50 mm  |
| SX813T   | 55 mm  |
| SX814T   | 60 mm  |
| SX834T   | 65 mm* |
| SX835T   | 70 mm  |
| SX839T   | 75 mm* |
| SX816T   | 80 mm  |
| SX840T   | 85 mm* |
| SX817T   | 90 mm  |
| SX841T   | 95 mm* |
| SX818T   | 100 mm |



### Rods, 5.2 mm

| Item No. | Length |
|----------|--------|
| SX110T   | 100 mm |
| SX112T   | 120 mm |
| SX115T   | 150 mm |
| SX118T   | 180 mm |
| SX120T   | 200 mm |



\*Not available yet

## Single Use Items

### Pre-mounted Set Screw with Centralizer

(single sterile packed)

| Item No. |
|----------|
| SX804T** |



### MACS II K-Wire Set Sterile

(consisting of 2 x K-Wire / 1 x Removal Instrument)

| Item No. |
|----------|
| FW406S** |



\*\*new with MACS II

# MACS II Instrument Tray\*

## MACS II Twin Screw Instrument Tray\*

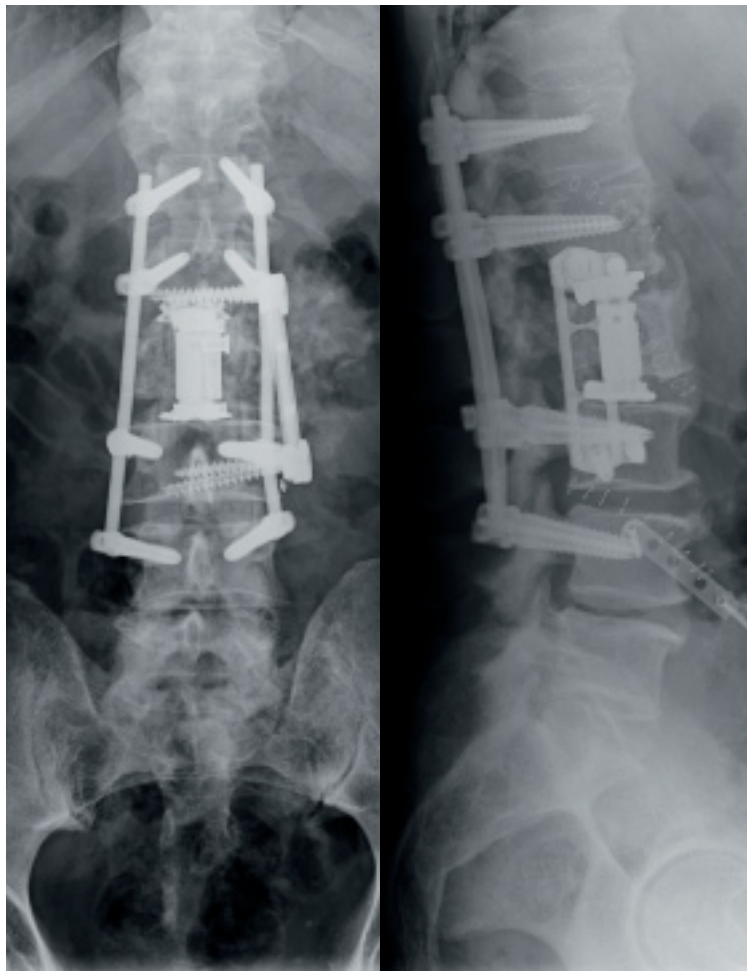
| Item No. | Description   | Qty. |
|----------|---|------|
| FW336R   | MACS TL® Revision Instrument, for Anterior Twin Screw | 1    |
| FW326R   | MACS TL Holding Instrument for Rod/Plate              | 1    |
| FW394R   | MACS II K-Wire Protection                             | 2    |
| FW395R   | MACS II T-Handle ¼" Coupling                          | 1    |
| FW396R   | MACS II Ball Head Screw Driver                        | 1    |
| FW397R   | MACS II Guide Tube                                    | 2    |
| FW398R   | MACS II Cannulated Screw Driver                       | 1    |
| FW399R   | MACS II Counter Torque Handle                         | 1    |
| FW407R   | MACS II Center Punch Lumbar                           | 1    |
| FW408R   | MACS II K-Wire Insertion Instrument                   | 1    |
| FW409R   | MACS II Guide Sleeve for Stabilizer Screw Lumbar      | 1    |
| FW411R   | MACS II Screw Driver for Set Screw                    | 1    |
| FW412R   | MACS II Torque Wrench for Set Screw                   | 1    |
| FW413R   | MACS II Guide Sleeve Stabilizer Screw Thoracic        | 1    |
| FW416R   | MACS II Fixation Nut Torque Wrench                    | 1    |
| FW417R   | MACS II Fixation Nut Socket Wrench                    | 1    |
| FW419R   | MACS II Torque Wrench for Set Screw Mounting          | 1    |
| FW429    | MACS II Mounting Device for SX804T                    | 1    |
| FG045R   | Miaspas® TL Bone Graft Measuring Instrument           | 1    |
| FW243R   | S4® Slotted Hammer Slot Width 12.5 mm                 | 1    |
| FW013R   | French Rod Bender                                     | 1    |
| MF940    | MACS II Instrument Set Base                           | 1    |
| MF941    | MACS II Instrument Set Outer Lid                      | 1    |
| MF942    | MACS II Instrument Set Upper Tray                     | 1    |
| MF943    | MACS II Instrument Set Lower Tray                     | 1    |

\*For use with MACS TL twin screw configuration only.

# MACS TL® Implant Tray

## MACS TL Implant Tray

| Item No. | Description                                     | Qty. |
|----------|---|------|
| SX792T   | MACS TL Polyaxial Screw 7.0 x 25 mm, Blue       | 4    |
| SX793T   | MACS TL Polyaxial Screw 7.0 x 30 mm, Blue       | 4    |
| SX794T   | MACS TL Polyaxial Screw 7.0 x 35 mm, Blue       | 4    |
| SX795T   | MACS TL Polyaxial Screw 7.0 x 40 mm, Blue       | 4    |
| SX796T   | MACS TL Polyaxial Screw 7.0 x 45 mm, Blue       | 4    |
| SX797T   | MACS TL Polyaxial Screw 7.0 x 50 mm, Blue       | 4    |
| SX782T   | MACS TL Stabilizational Screw 6.5 x 25 mm       | 4    |
| SX783T   | MACS TL Stabilizational Screw 6.5 x 30 mm       | 4    |
| SX784T   | MACS TL Stabilizational Screw 6.5 x 35 mm       | 4    |
| SX785T   | MACS TL Stabilizational Screw 6.5 x 40 mm       | 4    |
| SX786T   | MACS TL Stabilizational Screw 6.5 x 45 mm       | 4    |
| SX787T   | MACS TL Stabilizational Screw 6.5 x 50 mm       | 4    |
| SX821T   | MACS TL Polyaxial XL Screw 10 x 30 mm           | 2    |
| SX823T   | MACS TL Polyaxial XL Screw 10 x 40 mm           | 2    |
| SX800T   | MACS TL Polyaxial Clamp                         | 6    |
| SX802T   | MACS TL Fixation Nut                            | 8    |
| SX810T   | MACS TL Stabilization Plate 40 mm               | 2    |
| SX811T   | MACS TL Stabilization Plate 45 mm               | 2    |
| SX812T   | MACS TL Stabilization Plate 50 mm               | 2    |
| SX813T   | MACS TL Stabilization Plate 55 mm               | 2    |
| SX814T   | MACS TL Stabilization Plate 60 mm               | 2    |
| SX834T   | MACS TL Stabilization Plate 65 mm               | 2    |
| SX835T   | MACS TL Stabilization Plate 70 mm               | 2    |
| SX839T   | MACS TL Stabilization Plate 75 mm               | 2    |
| SX816T   | MACS TL Stabilization Plate 80 mm               | 2    |
| SX840T   | MACS TL Stabilization Plate 85 mm               | 2    |
| SX817T   | MACS TL Stabilization Plate 90 mm               | 2    |
| SX841T   | MACS TL Stabilization Plate 95 mm               | 2    |
| SX818T   | MACS TL Stabilization Plate 100 mm              | 2    |
| SX110T   | SSE 5.2 TI Rod 100 mm (MACS TL)                 | 2    |
| SX112T   | SSE 5.2 TI Rod 120 mm (MACS TL)                 | 2    |
| SX115T   | SSE 5.2 TI Rod 150 mm (MACS TL)                 | 2    |
| SX118T   | SSE 5.2 TI Rod 180 mm (MACS TL)                 | 2    |
| SX120T   | SSE 5.2 TI Rod 200 mm (MACS TL)                 | 2    |
| MF947    | MACS II Implant Set Base                        | 1    |
| MF948    | MACS II Implant Set Outer Lid                   | 1    |
| MF949    | MACS II Implant Set Plates Tray                 | 1    |
| MF950    | MACS II Implant Set Rod Tray                    | 1    |
| MF951    | MACS II Implant Set Caddy                       | 1    |
|          | <b>Sold In Sterile Box Included with ST0437</b> |      |
| SX804T   | MACS II Pre-Mounted Set Screw                   | 8    |
| FW406S   | MACS II K-Wire Set Sterile                      | 4    |



For additional information, contact Customer Service at 1-866-229-3002 or visit our website at [www.aesculapimplantsystems.com](http://www.aesculapimplantsystems.com).

All rights reserved. Technical alterations are possible. This leaflet may be used for no other purposes than offering, buying and selling of our products. No part may be copied or reproduced in any form. In the case of misuse we retain the rights to recall our catalogs and price lists and to take legal actions.

©2012 AESCULAP. ALL RIGHTS RESERVED. PRINTED IN THE USA.  
Aesculap is an equal opportunity employer

Aesculap Implant Systems, LLC | 3773 Corporate Parkway | Center Valley, PA | 18034  
Phone 866-229-3002 | Fax 610-984-9096 | [www.aesculapimplantsystems.com](http://www.aesculapimplantsystems.com)

Aesculap Implant Systems, LLC - a B. Braun company

DOC866 Rev B 1M 2/12